

LL6053 - Essentials Hygiene Pack - *Splash Gel Hand Sanitiser, Disposable 3 Ply Face Mask & H2O Wet Wipes:* Clear, White/Blue & Silver

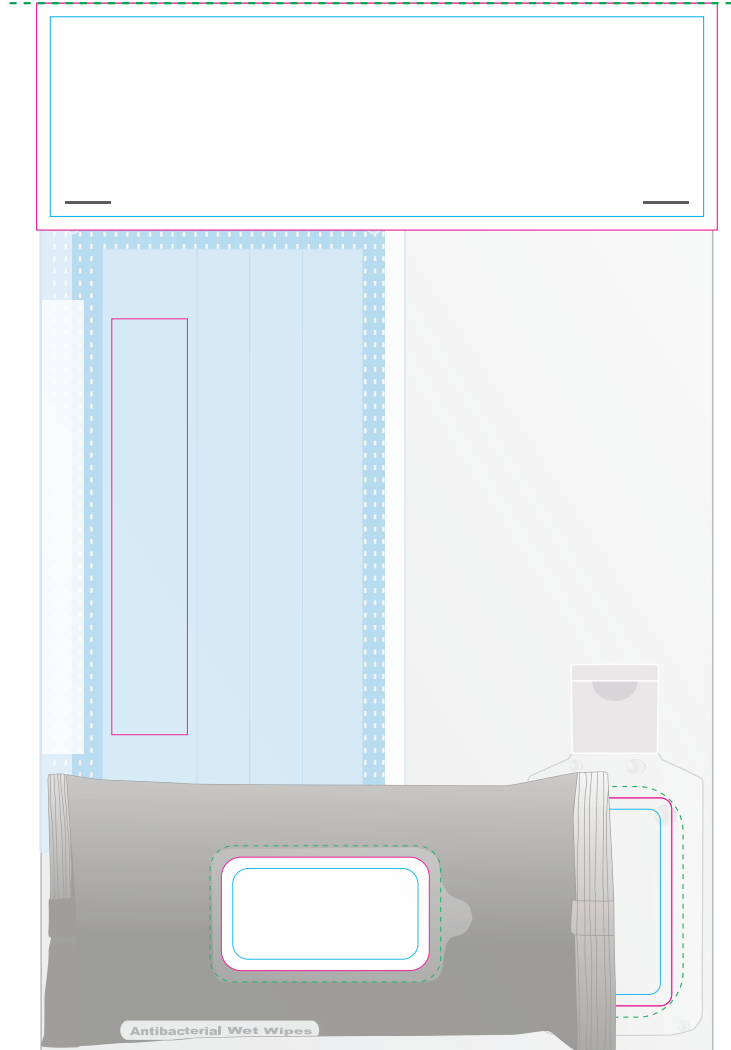
Label 

Digital 

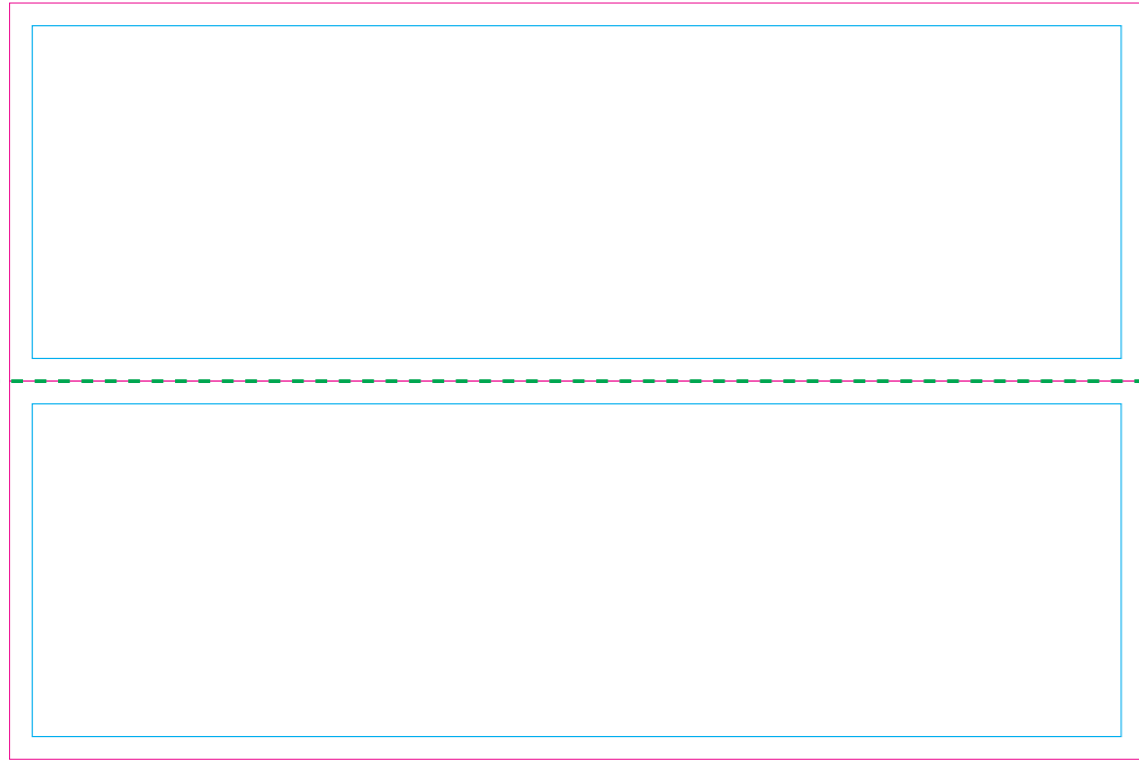
Screen Print  PMS
XXXc

Print colours available  White  Metallic Gold  Metallic Silver  Black

Note these are not medical grade devices



Digital



Bag Header - Side 1


Print Area: 150mmL x 100mmH


Actual print size: xxmmL x xxmmH


Bag Header - Side 2

Print Area: 150mmL x 100mmH

Actual print size: xxmmL x xxmmH

Max print area for copy & text 

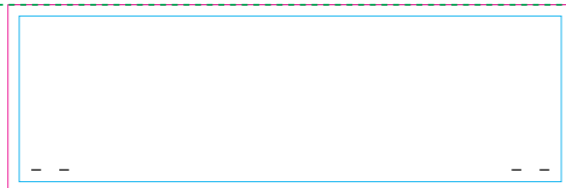
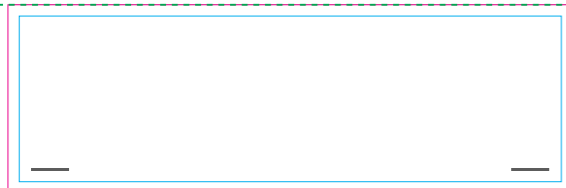
Finished print area 

Score/fold 

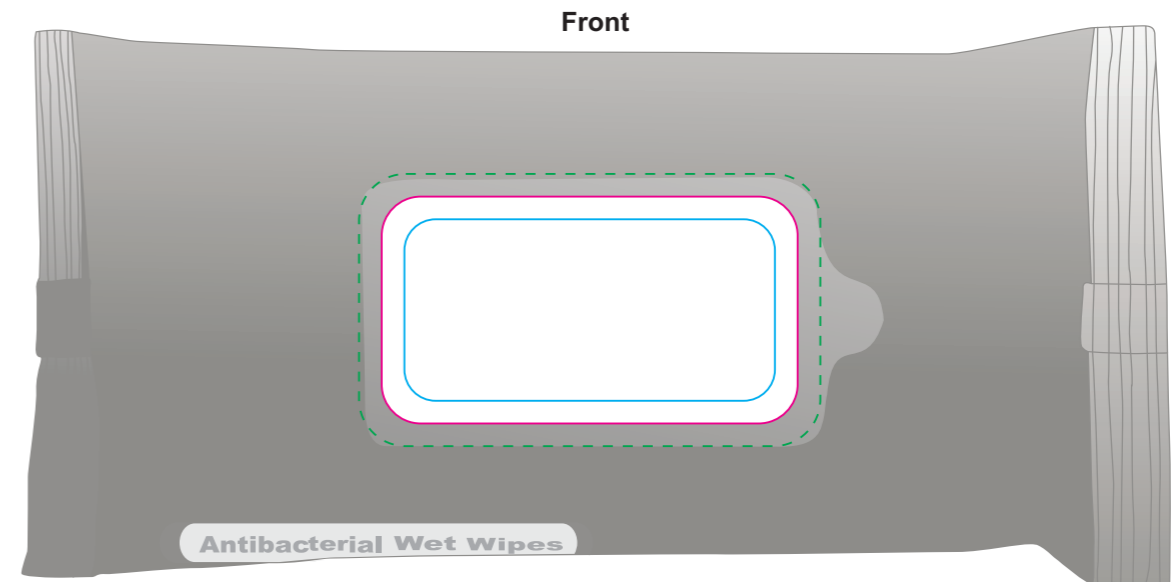
BELOW IS APPROX 50% OF SIZE

Side 1

Side 2




Label





Front

Print Area: 55mmL x 30mmH

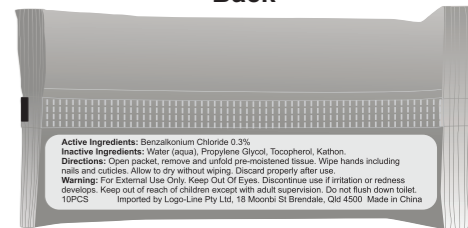
Actual print size: xxmmL x xxmmH

Max print area for copy & text 

Finished print area 

Score/fold 

Back



Active Ingredients: Benzalkonium Chloride 0.3%

Inactive Ingredients: Water (aqua), Propylene Glycol, Tocopherol, Kaolin.

Directions: Open packet, remove and unfold pre-moistened tissue. Wipe hands including nails and cuticles. Allow to dry without wiping. Discard properly after use.

Warning: For External Use Only. Keep Out Of Eyes. Discontinue use if irritation or redness develops. Keep out of reach of children except with adult supervision. Do not flush down toilet.

10PCS Imported by Logo-Line Pty Ltd, 18 Moorabie St, Brendale, Qld 4500. Made in China.

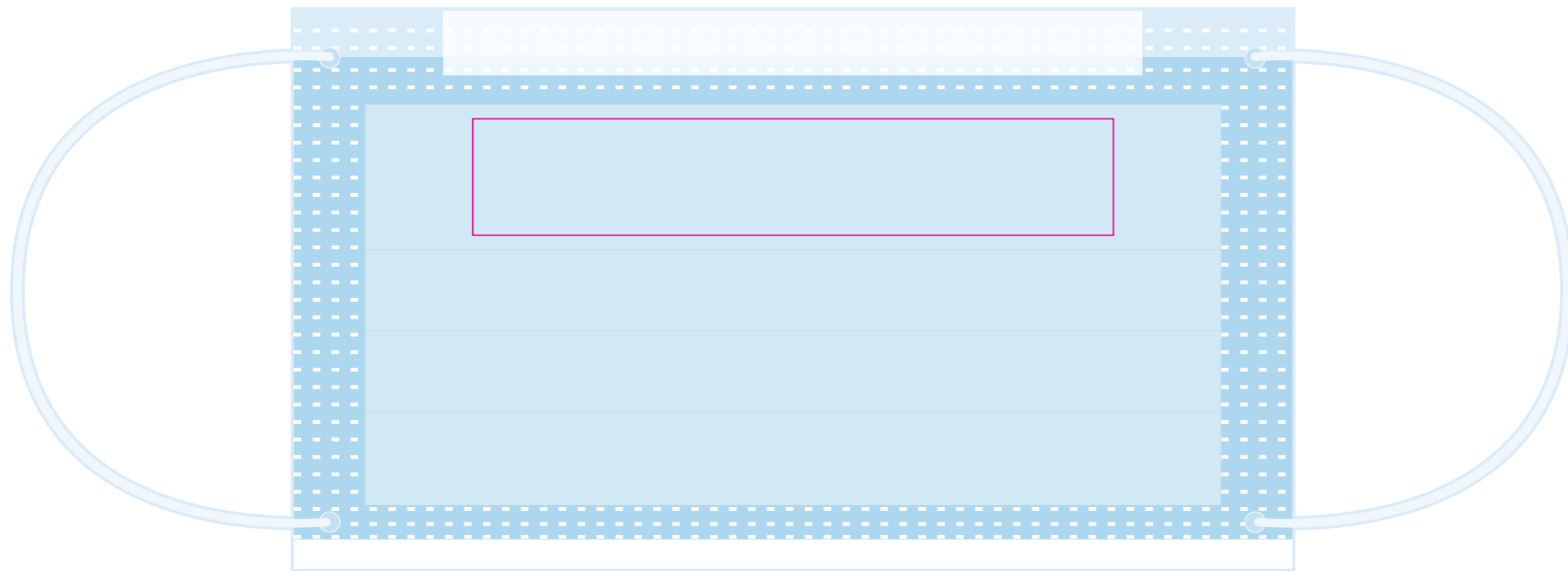
Screen Print PMS XXXc

Print colours available
White Metallic Gold Metallic Silver Black

Label



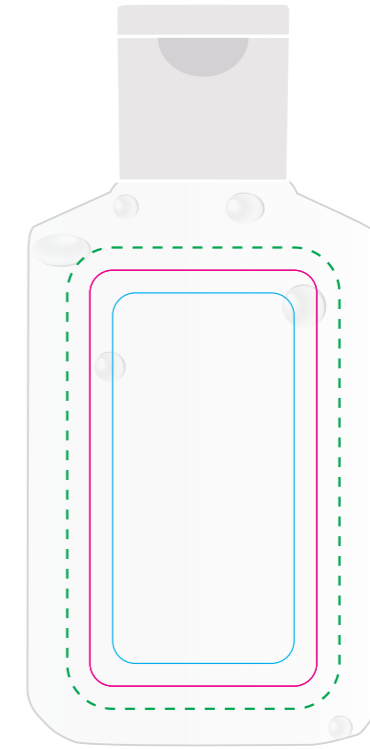
Nose piece goes at top of mask



Print Area: 110mmL x 20mmH
Actual print size: xxmmL x xxmmH

Finished print area

Front



Back - White label



Print Area: 30mmL x 55mmH
Actual print size: xxmmL x xxmmH

Max print area for copy & text
Finished print area
Bleed line

HAND SANITISER 60ml
Directions: Wet hands thoroughly with product and allow to dry without wiping. Do not store above 43°C.
May discolour certain surfaces or fabrics.
Active Ingredients: Alcohol 60%.
Inactive Ingredients: Water, Propylene Glycol, Polyacrylic Acid, DMDM Hydantion, Fragrance, Triethanolamine, Tocopheryl Acetate (Vitamin E).
WARNING: FLAMMABLE, KEEP AWAY FROM FIRE OR FLAME.
For external use only. Keep out of eyes. In case of eye contact immediately flush eyes with water, call Poisons Information Centre on 13 11 26. Discontinue use if irritation or redness develops on skin. If condition persists for more than 72 hours consult a doctor. **Keep out of reach of children.** If swallowed call Poisons Information Centre on 13 11 26.
Made in China.
Imported by: Logo-Line Australia Pty Ltd, 18 Moonbi St, Brendale, Queensland, 4500